

SET^{UP} Science

South Cheshire

Registered Charity Number: 1060092

President: Claire Curtis-Thomas MP

PERFORMANCE REVIEW 2008

SET^{UP} Science was founded in 1995 by
Soroptimist International of Nantwich and District
& The Women's Engineering Society
under the auspices of the British Association for the Advancement of Science.

President: Claire Curtis-Thomas, MP, MBA, C Eng, FIMechE

Vice- President: Vic Harris, B Sc (Eng), C Eng, MIMechE, CIPD

SET^{UP} Science Executive Committee

Chairman: Dr Vi Pritchard, MBBS, DCH

Vice-Chairman: Tony Salthouse, B Eng

Treasurer: Carole Salthouse

Secretary: Brenda Morris, BEM
Tom Protheroe, B Sc, DMS
Ray Stafford
Jacquie Weatherill
Geraldine Phillips
Elizabeth Taylor
Gill Palin

INTRODUCTION:

SET^{UP} Science is a local charity based in South Cheshire that offers young people the opportunity to interact with Science, Engineering and Technology, and aims to stimulate and encourage their continuing participation in science.

The main thrust of SET^{UP} Science is to arrange relevant presentations and events during National Science and Engineering Week. SET^{UP} Science meets all transport and other expenses. This year National Science and Engineering Week was from 7th to 16th March and in 2009 will be from 6th to 15th March.

Additionally a special Family Evening is arranged in Science Week. This year it was "Making Nature TV" by Janet Sumner and was held at Danebank College. Janet appears regularly on the television as a natural world presenter.

In 2008 we tried to organise a competition for Primary School children but because of the poor response this had to be cancelled.

PRESENTATIONS:

Compared to last year the number of presentations went down from 114 to 92 while the number of children attending went up significantly, 2964 to 3286.

The number of Facilitators went up mainly because we had more helpers from the MMU.

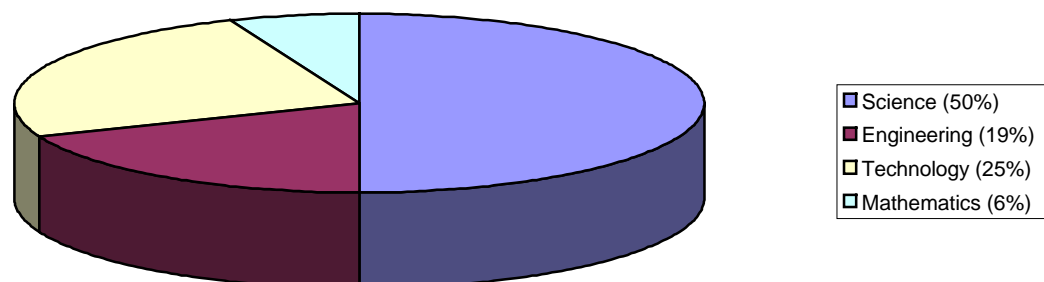
The costs of the presentations rose significantly. This was mainly because of the number of coaches needed and the rises in admission fees.

SUBJECT BALANCE:

Primary

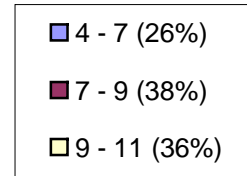
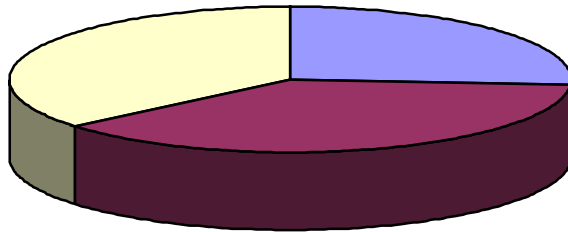
There is no significant subject breakdown as all the presentations can be classified as General Science.

Secondary



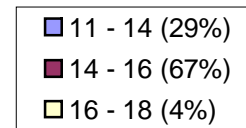
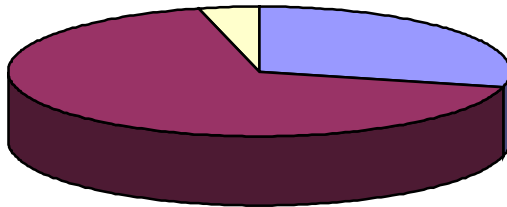
PUPIL PARTICIPATION (boys and girls by age):

PRIMARY



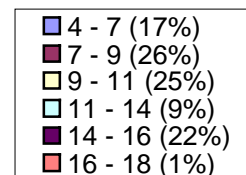
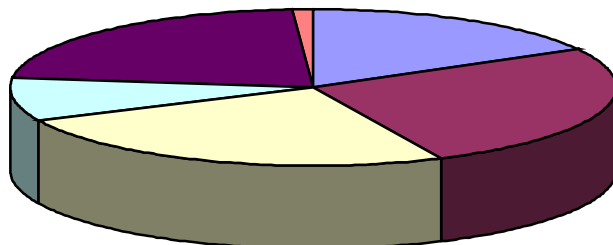
4-7	288 boys + 285 girls	= 573	26%
7 - 9	424 boys + 414 girls	= 838	38%
9 - 11	394 boys + 423 girls	= 817	36%
Total	1106 boys + 1122 girls	= 2228	

SECONDARY



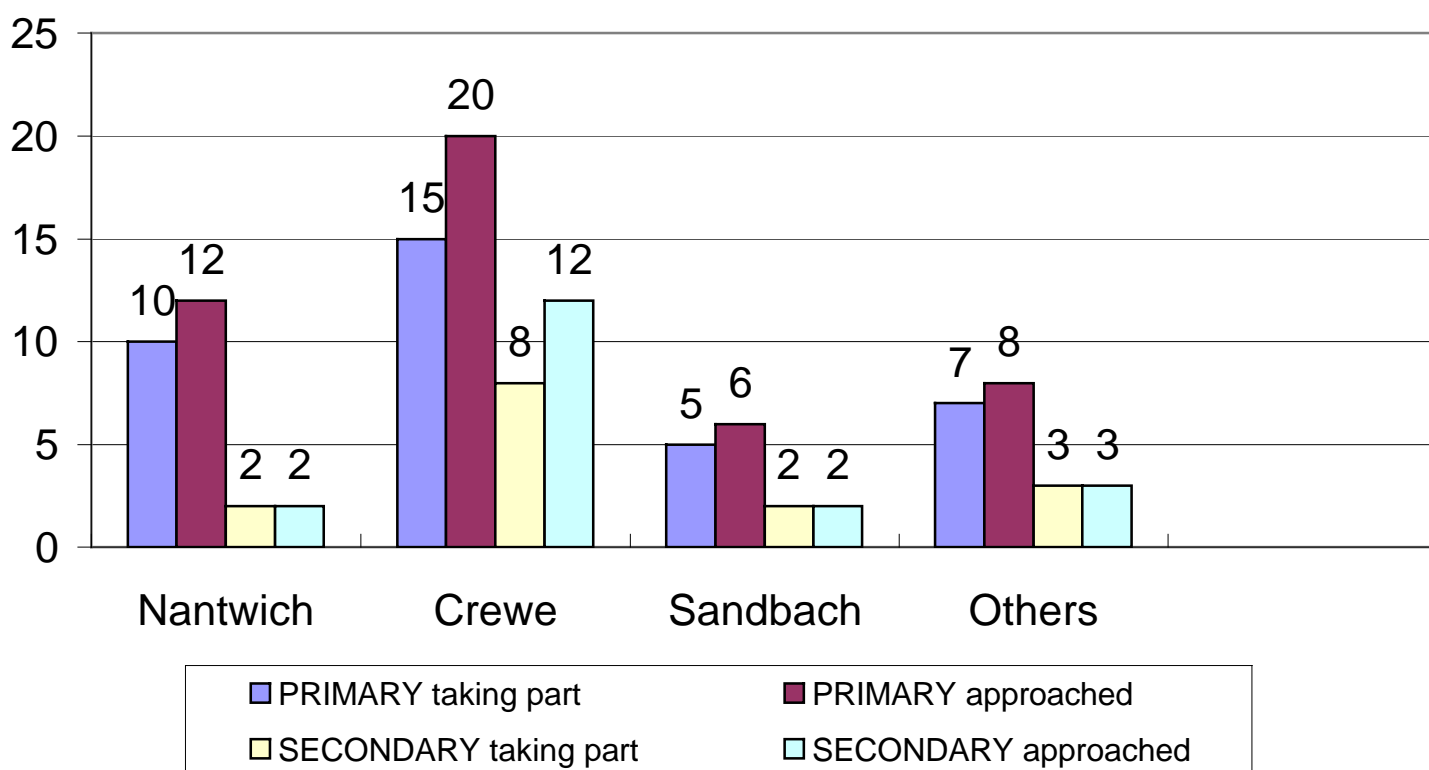
11-14	163 boys + 144 girls	= 307	29%
14-16	426 boys + 279 girls	= 705	67%
16-18	28 boys + 18 girls	= 46	4%
Total	617 boys + 441 girls	= 1058	

COMBINED



Total	1723 boys + 1563 girls	= 3286
-------	------------------------	--------

SCHOOL PARTICIPATION:



ORGANISATION DIMENSIONS for 2008 (2007 in brackets):

- **SET^{UP} Science presenters (27 Prim, 16 Sec)** **43 (54)**
- **SET^{UP} Science presentations (66 Prim, 26 Sec)** **92 (114)**
- **Schools/colleges contacted (46 Prim, 15 Sec)** **61 (70)**
- **Schools/colleges taking part (37 Prim, 11 Sec)** **48 (53)**
- **Children participating (2228 Prim, 1058 Sec)** **3286 (2964)**
- **Facilitators (including 28 MMU students)** **68 (56)**
(Only 2 facilitators did 3 or more sessions each; 6 last year)
- **Coaches provided** **36 (28)**

4 Primary presentations cancelled due to weather and three are being rearranged.

5 Secondary presentations cancelled: 3 because of the weather and 2 for management reasons

Evaluation form response:

Primary 51 Facilitators, 49 Teachers, 44 Presenters, 1 Student from 66
 Secondary 32 Facilitators, 25 Teachers, 31 Presenters, 25 Students from 39

THE FAMILY EVENING:

The theme of this year's Public evening on Friday, 7th March 2008 was "Making Nature TV". Dr Janet Sumner gave a fascinating talk during the first half of the evening on the pitfalls and pleasures of filming animals and wildlife. Her talk was illustrated with "behind the scenes footage". Vulcanology is Janet's main research interest and in the second half of the evening, she explained the measurements taken in and around the craters of volcanoes again illustrated by clips. Janet then demonstrated how lava flows and how gaseous explosions can shower rock fragments using honey and a shaken bottle coca-cola! About two hundred people, many young primary school enthusiasts and students filled the theatre. Everyone had an excellent and very enjoyable evening.

As usual, SET^{UP} Science keeps the attendance prices to a very attractive level: £3 for adults, and £1 for children and students.

FINANCE (2007 in brackets):

Coaches	£4834	(£4149)
Presenters' Fees and Expenses	£2226	(£2199)
Admission Charges	£1623	(£1161)
Full Administration Expenses	£ 216	(£704)
Insurance	£ 478	(£ 455)
Public Evening Costs	£ 568	(£ 255)
Public Evening Receipts	£- 303	(£- 225)
Competition Costs	£ 0	(£ 0)
TOTAL COSTS	£9,642	(£8,698)

FINANCIAL SPONSORS:

- North West Development Agency
- Chemical Society, North Staffs.
- Nantwich and Acton Grammar School Foundation (NAGS)
- Rotary Club of Crewe
- Rotary Club of Crewe and Nantwich Weaver
- Weaver (Nantwich) Probus Club
- Engineering and Technology Board
- Crewe & Nantwich Borough
- Communicate Research Ltd
- Custom Powders Ltd
- Mikro Coaches
- Claire Curtis-Thomas, MP

2007/8 Considerations

1. Funding – new ideas, etc
2. New committee members
3. Teachers need to get relevant information, and then contact the presenter.

2008/9 Considerations

1. Funding – new ideas, etc.
2. New committee members
3. The SET^{UP} Science Competition needs new thoughts and probably a new format.
4. Extending the use of email to Presenters and Facilitators.